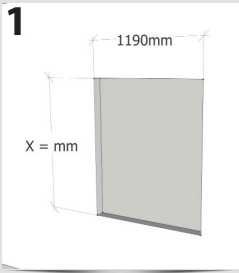




## Manual: Blackline Tunnel series - self opening

Important : The wall around the hole should be completely flat/even

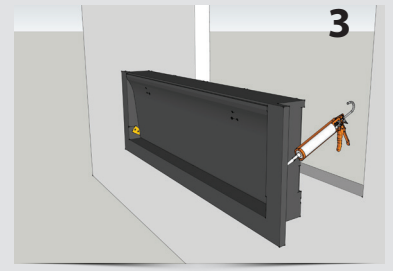


Size X is:  
BT02 =720 mm  
BT03 =1075 mm  
BT04 =1430 mm  
BT05 =1785 mm

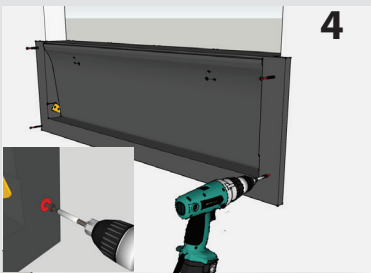
Hole size always 1190 mm wide, height depends on the amount of inlets, see table above.



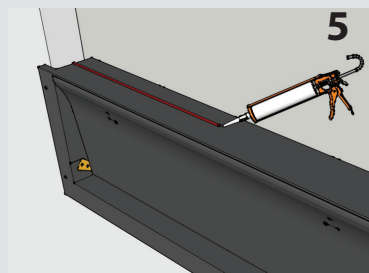
Optional: Mounting set - screws 5x60 with flat washer in wall plug 8



Put glue behind the flange of the first inlet - this is the bottom inlet



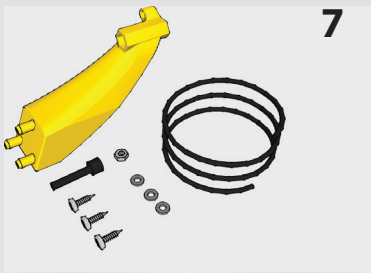
Mount bottom inlet into the hole with screws. Use pan head screw 5x60 with a flat washer



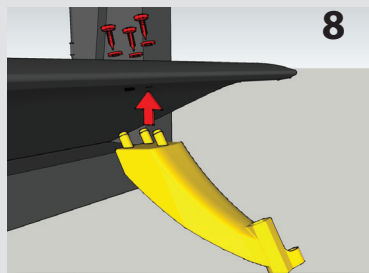
Put glue on top of the bottom inlet



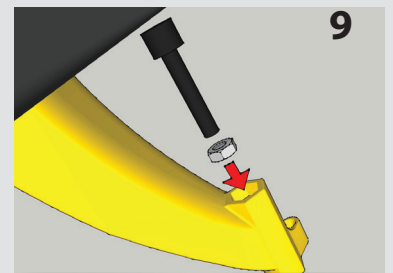
Repeat steps 3,4 and 5 for next inlets till the hole is closed



2 sets per inlet supplied use panhead screws 4,5x25



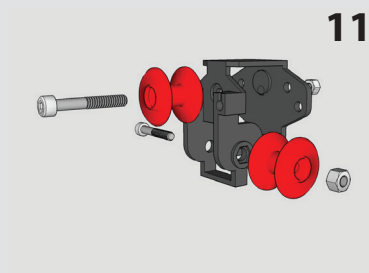
Screw ropeholder on the flap of the inlet with 3 screws



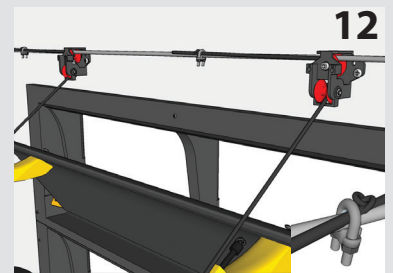
Place the fine tune screw and bolt



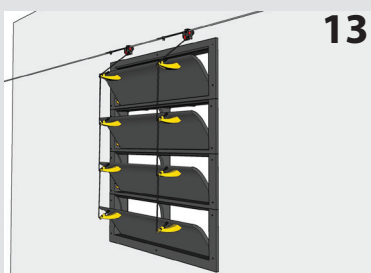
Connect all flaps with ropes, see detail



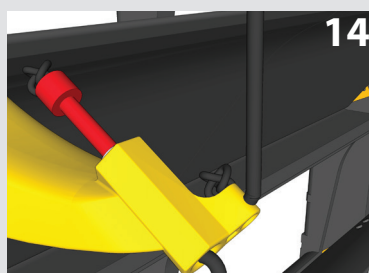
Assemble roller - 2 x



Mount 2 rollers above inlet and connect ropes with cable clamp to a rod



For finetuning, open the flaps



Use finetuning screws to adjust every individual flap